

OT Asset & Vulnerability Management

SyskeyOT Cockpit



Perpetual /
subscription
Validity



Legacy & Modern
Assets



Unlimited
Assets



Regulatory compliance
IEC62443/ISO27001

Enables customers of Utilities/Critical Infrastructure to

Centralize and Monitor OT Assets distributed across their network.

1. **Asset Discovery:** Enables the discovery, real-time & periodic scanning, and collection of asset status, health and inventory information from OT/IT Devices using Industrial Protocols like IEC 61850 Ed1 & Ed2, Modbus TCP, SNMP v1, v2c, v3, and WMI/WinRM.

2. **Accurate Asset Inventory:** Maintains an accurate and current Centralized Asset Inventory, aiding in tracking assets and identifying security and technology gaps.

3. **OT Asset Vulnerability Assessment:** Centralized Asset Inventory would be compared with vulnerability databases to identify potential vulnerabilities/security gaps/missing patches if any.

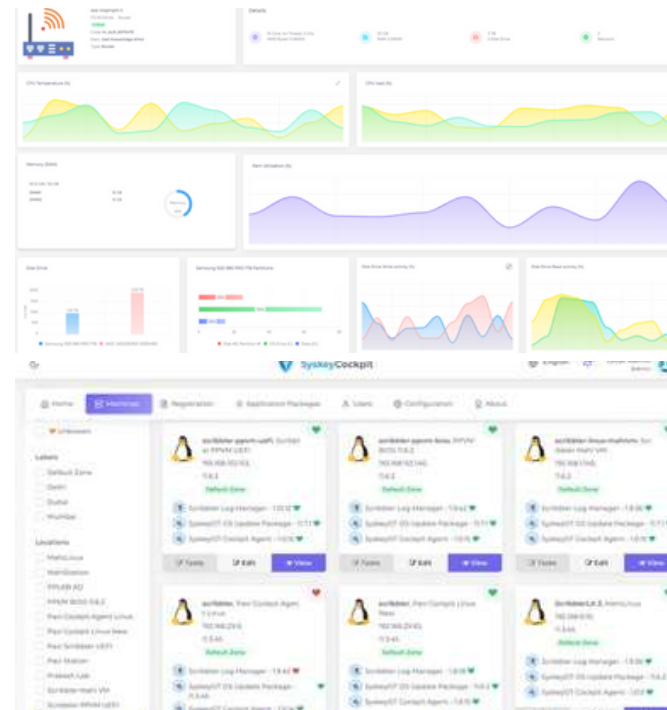
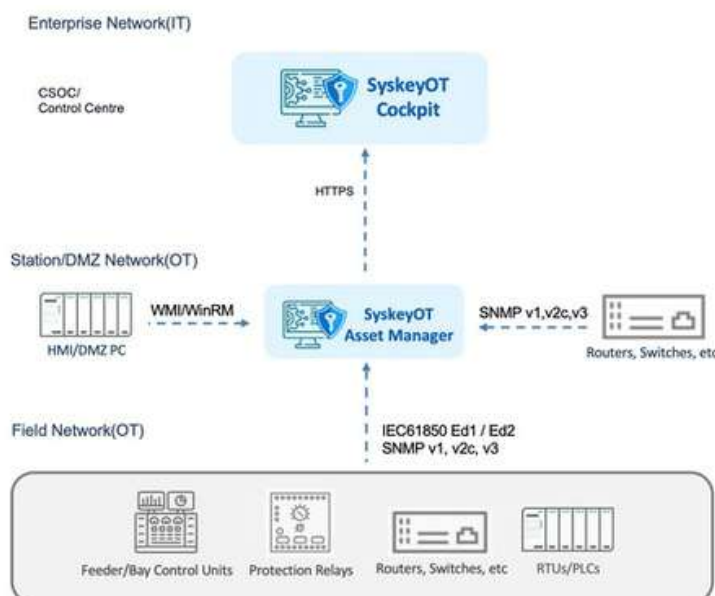
4. **Health Status Monitoring:** Real-time monitoring of OT assets' health status/performance for proactive preventive maintenance.

5. **Centralized Management:** Facilitates centralized management of SyskeyOT Asset Manager Instances deployed in remote stations throughout the network. This includes Configuration, Patch Updates, and Health Status Monitoring.

Roadmap Enhancements:

6. **OT Network Management:** Planned enhancements include real-time network monitoring, network topology monitoring, and a domain-specific network intrusion detection system (DS-NIDS).

Asset Management Solution Architecture



SyskeyOT Asset Manager

OS: Windows 10+/Windows Server 2016+
CPU: 2 Core 2GHz
Storage: 1GB



SyskeyOT Cockpit

OS: Windows 10+/Windows Server 2016+
CPU: 4 Core 2 GHz RAM: 8 GB Storage:
Recommended 100 GB (To store more
upgrades it may go up)

SyskeyOT Solutions Trusted by